



Jordan fishwick

3 Gainsborough Close, SK9 2NP
Guide Price £550,000



Gainsborough Close Wilmslow

Guide Price £550,000




Jordan Fishwick are pleased to introduce this beautifully maintained detached home to the market tucked away within a quiet and sought-after cul-de-sac. The accommodation begins with a welcoming entrance hallway featuring a downstairs WC, leading through to a generous open-plan living and dining room. This impressive space is enhanced by a modern feature fireplace and French doors that open directly onto the rear patio. The ground floor further benefits from a spacious breakfast kitchen fitted with a comprehensive range of base and wall units and integrated appliances. Direct access to the integral garage as well as the rear garden from the kitchen. To the first floor, there are four well-proportioned bedrooms, including three generous doubles and a comfortable single bedroom. The principal bedroom features fitted wardrobes and a stylish en-suite shower room as well as a contemporary family bathroom. Externally, the property enjoys a neat lawned garden to the front, along with a private driveway providing off-road parking and access to the integral garage. To the rear, the landscaped south-facing garden offers a private and tranquil setting, complete with a patio area. Must view!



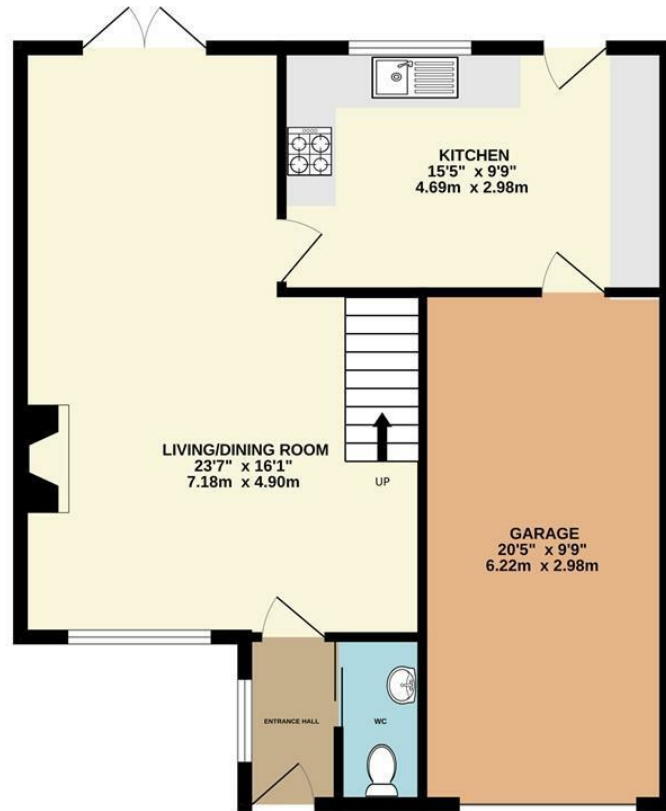
- Detached Home
- Four Bedrooms
- South Facing Garden
- Popular Location



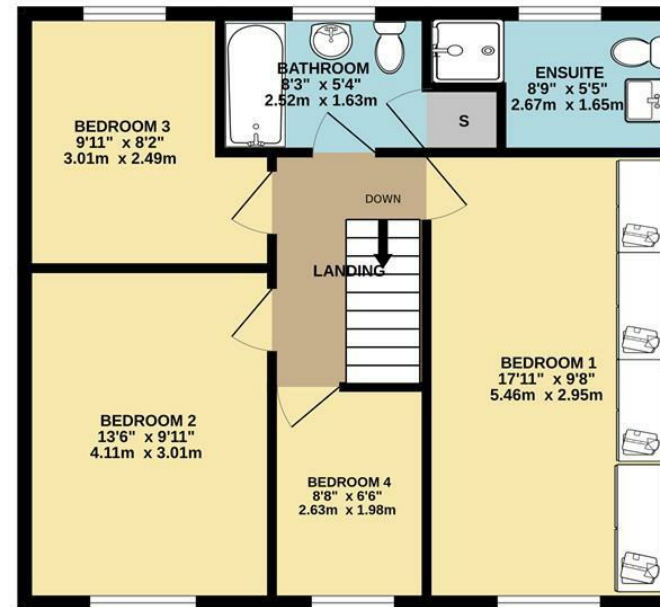
Energy Efficiency Rating		
	Current	Potential
Very energy efficient - lower running costs		
(92 plus) A		
(81-91) B		
(69-80) C		80
(55-68) D	69	
(39-54) E		
(21-38) F		
(1-20) G		
Not energy efficient - higher running costs		
England & Wales	EU Directive 2002/91/EC 	



GROUND FLOOR



1ST FLOOR



Measurements are approximate. Not to scale. Illustrative purposes only
Made with Metropix ©2026



These particulars are believed to be accurate but they are not guaranteed and do not form a contract. Neither Jordan Fishwick nor the vendor or lessor accept any responsibility in respect of these particulars, which are not intended to be statements or representations of fact and any intending purchaser or lessee must satisfy himself by inspection or otherwise as to the correctness of each of the statements contained in these particulars. Any floorplans on this brochure are for illustrative purposes only and are not necessarily to scale.

Offices at: Chorlton, Didsbury, Disley, Hale, Glossop, Macclesfield, Manchester Deansgate, Manchester Whitworth Street, New Mills, Sale, Wilmslow and Withington

36-38 Alderley Road, Wilmslow SK91JX
01625 532000

wilmslow@jordanfishwick.co.uk
www.jordanfishwick.co.uk